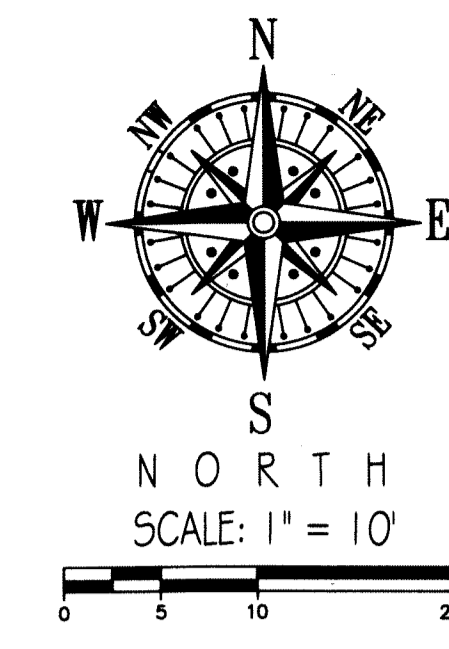


175



STATE OF FLORIDA
COUNTY OF PALM BEACH

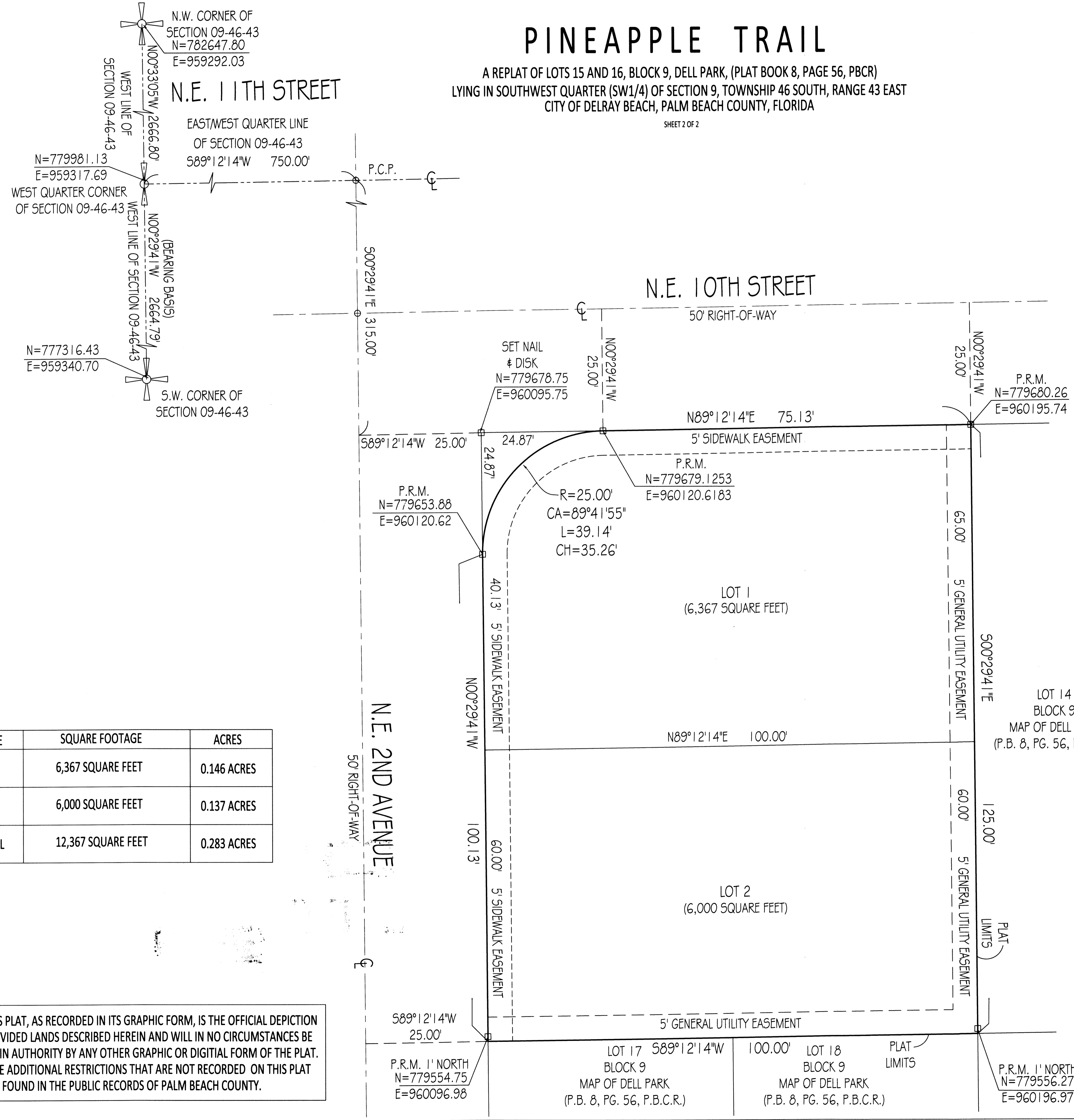
THIS PLAT WAS FILED FOR RECORD AT
THIS DAY OF
2020, AND DULY
RECORDED IN PLAT BOOK NO. _____
ON PAGE(S)
SHARON R. BOCK CLERK & COMPTROLLER

BY: _____ D.C.

PINEAPPLE TRAIL

A REPLAT OF LOTS 15 AND 16, BLOCK 9, DELL PARK, (PLAT BOOK 8, PAGE 56, PBCR)
LYING IN SOUTHWEST QUARTER (SW1/4) OF SECTION 9, TOWNSHIP 46 SOUTH, RANGE 43 EAST
CITY OF DELRAY BEACH, PALM BEACH COUNTY, FLORIDA

SHEET 2 OF 2



NAME	SQUARE FOOTAGE	ACRES
LOT 1	6,367 SQUARE FEET	0.146 ACRES
LOT 2	6,000 SQUARE FEET	0.137 ACRES
TOTAL	12,367 SQUARE FEET	0.283 ACRES

"NOTICE" THIS PLAT, AS RECORDED IN ITS GRAPHIC FORM, IS THE OFFICIAL DEPICTION OF THE SUBDIVIDED LANDS DESCRIBED HEREIN AND WILL IN NO CIRCUMSTANCES BE SUPPLANTED IN AUTHORITY BY ANY OTHER GRAPHIC OR DIGITAL FORM OF THE PLAT. THERE MAY BE ADDITIONAL RESTRICTIONS THAT ARE NOT RECORDED ON THIS PLAT THAT MAY BE FOUND IN THE PUBLIC RECORDS OF PALM BEACH COUNTY.

SURVEYOR'S NOTES:

- BEARINGS SHOWN HEREON ARE BASED ON THE STATE PLANE COORDINATE SYSTEM OF NAD 83, 1990 ADJUSTMENT. THE LINE BETWEEN THE WEST ONE QUARTER CORNER BEING A PALM BEACH COUNTY BRASS DISC SET IN A CONCRETE MONUMENT 10" IN DIAMETER AND THE SOUTHWEST CORNER BEING A PALM BEACH COUNTY BRASS DISC SET IN A CONCRETE MONUMENT 10" IN DIAMETER OF SECTION 9, TOWNSHIP 46 SOUTH, RANGE 43 EAST HAS A BEARING OF NORTH 00°29'41" WEST, ALL OTHER BEARINGS RELATIVE THERETO.
- THERE MAY BE ADDITIONAL RESTRICTIONS THAT ARE NOT RECORDED ON THIS PLAT THAT MAY BE FOUND IN THE PUBLIC RECORDS OF PALM BEACH COUNTY, FLORIDA.
- THE CITY OF DELRAY BEACH IS HEREBY GRANTED THE RIGHT OF ACCESS FOR EMERGENCY MAINTENANCE PURPOSES.
- THERE SHALL BE NO BUILDINGS OR ANY KIND OF CONSTRUCTION PLACED ON WATER, SEWER OR DRAINAGE EASEMENTS. NO STRUCTURES SHALL BE PLACED WITHIN A HORIZONTAL DISTANCE OF 10 FEET FROM ANY EXISTING OR PROPOSED CITY OF DELRAY BEACH MAINTAINED WATER, SEWER OR DRAINAGE FACILITIES. CONSTRUCTION OR LANDSCAPING UPON MAINTENANCE OR MAINTENANCE ACCESS EASEMENTS MUST BE IN CONFORMANCE WITH ALL BUILDING AND ZONING CODES AND/OR ORDINANCES OF THE CITY OF DELRAY BEACH.
- THERE SHALL BE NO TREES OR SHRUBS PLACED ON UTILITY EASEMENTS WHICH ARE PROVIDED FOR WATER AND SEWER USE OR UPON DRAINAGE EASEMENTS. LANDSCAPING ON OTHER UTILITY EASEMENTS SHALL BE ALLOWED ONLY AFTER CONSENT OF ALL UTILITY COMPANIES OCCUPYING SAME.
- IN THOSE CASES WHERE EASEMENTS OF DIFFERENT TYPES CROSS OR OTHERWISE COINCIDE, DRAINAGE EASEMENT WILL HAVE FIRST PRIORITY, UTILITY EASEMENTS HAVE SECOND PRIORITY, ANY ACCESS EASEMENTS SHALL HAVE THIRD PRIORITY, AND ALL OTHER EASEMENTS SHALL BE SUBORDINATE TO THESE WITH THEIR PRIORITIES BEING DETERMINED BY USE RIGHTS GRANTED.
- COORDINATES SHOWN ARE GRID COORDINATES DATUM = NAD 83 (1990 ADJUSTMENT). ZONE = FLORIDA EAST ZONE LINEAR UNIT = U.S. SURVEY FEET. COORDINATES SYSTEM = 1983 STATE PLANE TRANSVERSE MERCATOR PROJECTION ALL DISTANCES ARE GROUND. SCALE FACTOR = 1.000002357. PLAT BEARING = GRID BEARING. GROUND DISTANCE X SCALE FACTOR = GRID DISTANCE.
- DIMENSIONS SHOWN AT BLOCK CORNERS ARE TO THE INTERSECTIONS THERETO.
- CURVE RADII ARE 25 FEET UNLESS OTHERWISE SHOWN.

LEGEND:

CH	CHORD LENGTH
C/L	CENTERLINE
P.C.P.	PERMANENT CONTROL POINT
P.R.M.	PERMANENT REFERENCE MONUMENT 4" DIAMETER BY 24" CONCRETE WITH ALUMINUM DISC MARKED L.S. 5639
S.F.	SQUARE FOOT
L.B.	LICENSED BUSINESS
L.S.	LAND SURVEYOR
CA	CENTRAL ANGLE
A	ARC DISTANCE
R	RADIUS
S.W.E.	SIDE WALK EASEMENT
U.E.	UTILITY EASEMENT
P.B.C.R.	PALM BEACH COUNTY RECORDS
P.B.	PLAT BOOK
PG.	PAGE



THIS INSTRUMENT WAS PREPARED BY
ANDREW SNYDER, P.S.M. 5369, STATE OF FLORIDA
LANDTEC SURVEYING, INC.
481 E. HILLSBORO BOULEVARD, SUITE 100-A
DEERFIELD BEACH, FLORIDA 33441